



TMS Release 12.1 Final Bullets

Scheduled Release Date: 06/01/2003

Table of Contents

Important Release Notes – Read Before Using	3
Installation Notes.....	3
EDI and Communications	4
EDI 161 Message.....	4
Client Profile.....	5
Demurrage:	5
CSO Outbound Interchange Auto-Delete Flag:.....	6
CSO Options for Printing Trains:.....	7
Moving Cars	8
Moving Cars	8
New functions over the Switch To field	8
Managing Outbound Consists	8
Classification and Hump Lists	8
New Move Types	8
High/Wide Modifications.....	9
mCrew Updates	10
AEI Improvements.....	12
Changes in Train Functions	13
Intermodal Ramping Consist Change	13
Inbound Consists Changes	14
Inbound Consist Screen and Summary Changes	16
Customer Internet Work Queue	18
Notification and Administrative Message Changes.....	19
Notification and Administrative Message Changes.....	19
New High/Wide Notification Option	19
Automatic Notification Enhancement	20
Administrative Message Changes.....	21
RWC and Waybill Changes.....	22
Build Multi-Car for Equipment Not Yet On-Line	22
Supertrip.....	24
Automatic Refresh and Undo Load/Unload.....	24
Report Calculation Changes	24
Car Owner Field Change	24
Currency Code	24
Reports.....	25
Automatic Report Scheduling.....	25
New Online Inventory Report	25
Additional Online Inventory Report Enhancements	27
Air Brake Test Report Change	29
New Activity by Shift Report.....	30
Switching/Miscellaneous and Demurrage Billing	31
Private Car Demurrage Change.....	31
PCON History Record Deleted.....	31
PCON Deleted at Re-Bill Time	31
Master Files.....	32
Synonym Master Changes	32
Customer Address Synonym.....	32
City Synonym	33
Blocking Table Updates	35

Important Release Notes – Read Before Using

When this release is installed on your operation, one of the first steps you should take is to review your Customer Profile. It now includes many new options that you can use to customize the manner in which TMS operates on your railroad.

There are now ten screens to help you set up the system for your road. Review these screens carefully and adjust them as needed to ensure TMS is set up correctly for your road. These new options are described completely in this document.

The Blocking Rules have undergone extensive modification. The loaded/empty block rules have been merged into one table. RMI highly recommends that once the release is installed you review the blocking tables and resequence or modify their order as necessary.

Installation Notes

- Many of the enhanced features available in this release will not appear on the menu screens until you update each user's Soft Menus to access the new functions. Once this new release is installed, be sure to update your soft menu tables to make the new options available.
- RMI's Support Staff is available to assist you either by phone or in a custom designed training class to acquaint users with the features of this new release. Please give us a call at (404) 355-6734 or email us at support@railcarmgt.com to learn more about the ways we can assist you to best use this powerful system.

EDI and Communications

EDI 161 Message

TMS has been enhanced with the capability of receiving TRAIN 161 messages from connecting carriers. If you determine your road needs to read and interpret these consist reportings, contact RMI support for more information on how the system processes and uses these messages. (*Project 8519 and others*)

Client Profile

Several new options have been made a part of the Client Profile. These new features enable you to further customize the manner in which TMS functions on your railroad.

Demurrage:

You can use the Delete PCON/STEA option on Re-Bill to instruct TMS to automatically remove the PCON or Storage event for a car if it is rebilled while in that status. The *Client Demurrage Setup* screen appears: (*Project 8539*).

RSCYE1R	NSRR	Client Demurrage Setup	RMICDBA1
CHANGE			
IRCS/Connect Version is: 12.00			
Road Mark: NSRR	Name LOUISVILLE & INDIANAPOLIS RAILROAD	260 Number 434	

DEMURRAGE:			
Process Demurrage Y	Yes		
Calculate Storage Y	Yes		
Send To Cash. . .	No		
Unloading Code. . .	SYSAVG-U		
Loading Code. . .	SYSAVG-L		
Invoice Number. . .	928		
Delete PCON/STEA on Re-bill events .	No		

CSO Outbound Interchange Auto-Delete Flag:

You can now use TMS to automatically delete 418 consists once they have been transmitted. The new *Client Train Related* CSO screen appears:
(Project 8813)

RSDDE1R	NSRR	Client Train Related	RMICDBA1	CHANGE
		IRCS/Connect Version is: 12.00		
Road Mark: NSRR	Name	LOUISVILLE & INDIANAPOLIS RAILROAD	260 Number	434

TRAIN MOVEMENT RELATED:				
Must Depart Train Before Arrival	Y	Yes		
Automatically Print Train Papers	Y	Yes		
Require Train Set Before Departure		No		
Maintain Train Work Queue		No		
Auto Delete O/B Interchange			Yes	
TRAIN SCHEDULE RELATED				
Use Train Assignments		No		
Use Train Schedules	Y	Yes		
Use Car Schedules		No		
Days In Advance For Auto Train Create		(0 = Today, 1 = Tomorrow, etc...)		
Hours Before Departure For Pend Train	4	(1-24)		

If you set the *Auto Delete O/B Interchange* flag to **Yes**, interchanges will be automatically deleted from the **Outbound Interchange** option once the transmission has completed.

GSO Options for Printing Trains:

You can now use TMS to control default settings for printing trains. The new *Client Print Defaults* screen appears: (Project 8845).

RSC5E1R	NSRR	Client Print Defaults	RMICDBA1	CHAN
IRCS/Connect Version is: 12.00				
Road Mark: NSRR Name LOUISVILLE & INDIANAPOLIS RAILROAD 260 Number 434				

REPORT MENU DEFAULTS:				
Yard Switch Lists/Work Lists:				
Yard List Reports Page Break	Y	Yes		
Work List Reports Page Break	Y	Yes		
Print Hazmat Information . .	Y	Yes		
Print Special Instructions	Y	Yes		

The following default field settings are available:

Yard List Reports Page Break: Enter a **Y** to insert a page break between tracks on switch lists.

Work List Reports Page Break: Enter a **Y** to insert a page break between tracks on switch lists generated out of a work list.

Print Hazmat Information: Enter **Y** to have TMS automatically print Hazmat information on switch lists.

Print Special Instructions: Enter **Y** to have TMS automatically print special instructions beneath cars on train lists.

Moving Cars

New functions over the Switch To field

TMS was modified to provide additional functions associated with the new *Switch To* field. This new field allows you to block cars or manage yards based on the cars' next Online destination as opposed to the final Block-To destination. Large railroads, or those using large classification yards, should find this new field provides far greater flexibility in planning the next destination of an online car.

Although this new field has been available since last summer, we have currently modified several areas within TMS so that the *Switch To* value is automatically generated by the system. Worked under project 8604 and others, railroads will find that the value of this new field is automatically calculated for you when waybills are modified or created.

We will be demonstrating how to use this powerful new option during our annual user group meeting this June. Join us!

Managing Outbound Consists

You can now set a flag to automatically delete outbound consists once they are transmitted. See the "Client Profile" section for more information on this topic.

Classification and Hump Lists

The option to build a classification list was expanded in this release to also provide the ability to build and transmit a hump list.

New Move Types

The following new move types were made a part of TMS:

- **HUMP:** Generates automatically when a car is humped.
- **ICHH:** Automatically creates outbound interchange messages (Train II and Car Hire) when a car is humped.

High/Wide Modifications

TMS has been enhanced to provide users handling high/wide loads greater flexibility in accounting for and managing these movements. By pressing **F5** from the STCC information screen, you can capture additional dimension and switching information for high/wide cars crossing your property. The new *Waybill Dimensional Load* screen appears:

```

RSDIE1R      NSRR      Waybill Dimensional Load      RMICDBB1
-----
Equip: Init NOKL Nbr 730095
-----
Switch Instructions. : HIGH WIDE LOAD
Special Instructions : Check With Dispatcher Before Entering Main
Load Type. . . . . : S Single Car      File Number . . . . : S-18473
Requesting Carrier : CSXT              Number of Idlers. . :
-----
                FT IN
Extreme Length . . . : 60
Extreme Width. . . . : 18 5
First Overhang . . . :
Truck Center Length. : 60 4
                FT IN
Extreme Height . . . . : 19 8
Height of Extreme Width. : 18
Second Overhang. . . . :
Number of Axles . . . . . : 4
-----
Remarks:
  COMBINE AND COMBINE PARTS.
  JOHN DEER DISTRIBUTION CENTER - CLEARED BEYOND MP 23.8

F3=Exit   F9=Additional Remarks   F10=Special Instructions   F11=Delete
  
```

A new work queue is also available to monitor all high/wide cars either currently on-line or scheduled to be delivered to you. Cars with a High/Wide indicator will automatically be placed in the High/Wide Queue.

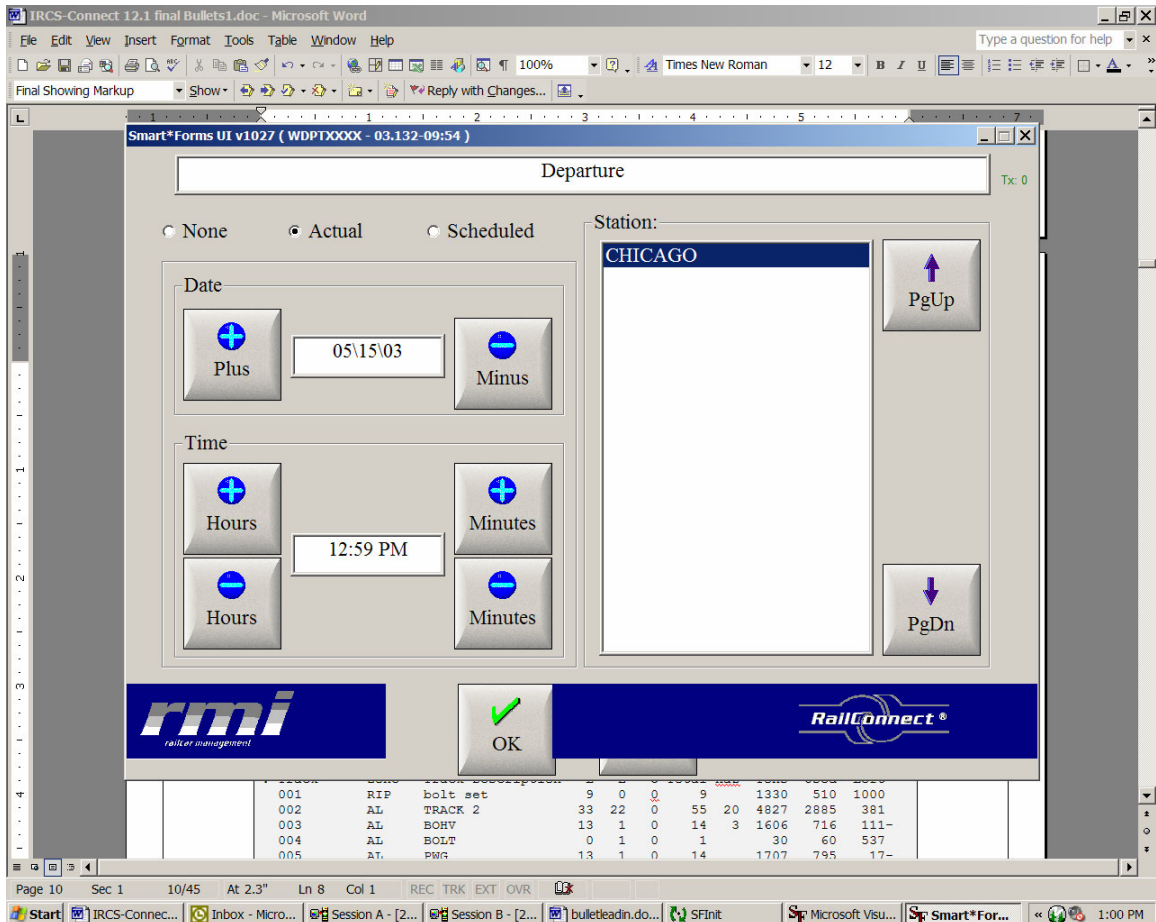
```

RSQFDFR      NSRR      Work With High/Wide Queue      RMICDBB1
-----
Car:          Station/Train :          L/E:
Waybill Nbr:  Waybill Status:  Traffic Type:  Hold Status: H
-----
                Station          W/B          Trf
? Car         LE or Train      Waybill/BOL  Sts  Road  Typ  Commodity
NOKL 730095  L  INDY          269157      ACT  CSXT  RCV  COMBINES

                                           Bottom
C=Comments  D=Dimensional Data  W=W/B  H=History  P=Print  N=Print Notify
E=EDI  R=Rlse Hold  S=All Holds  T=Rlse &Cmplte  F3=Exit  F9=Put Eqp on Hold
Hazmat Error: None
  
```

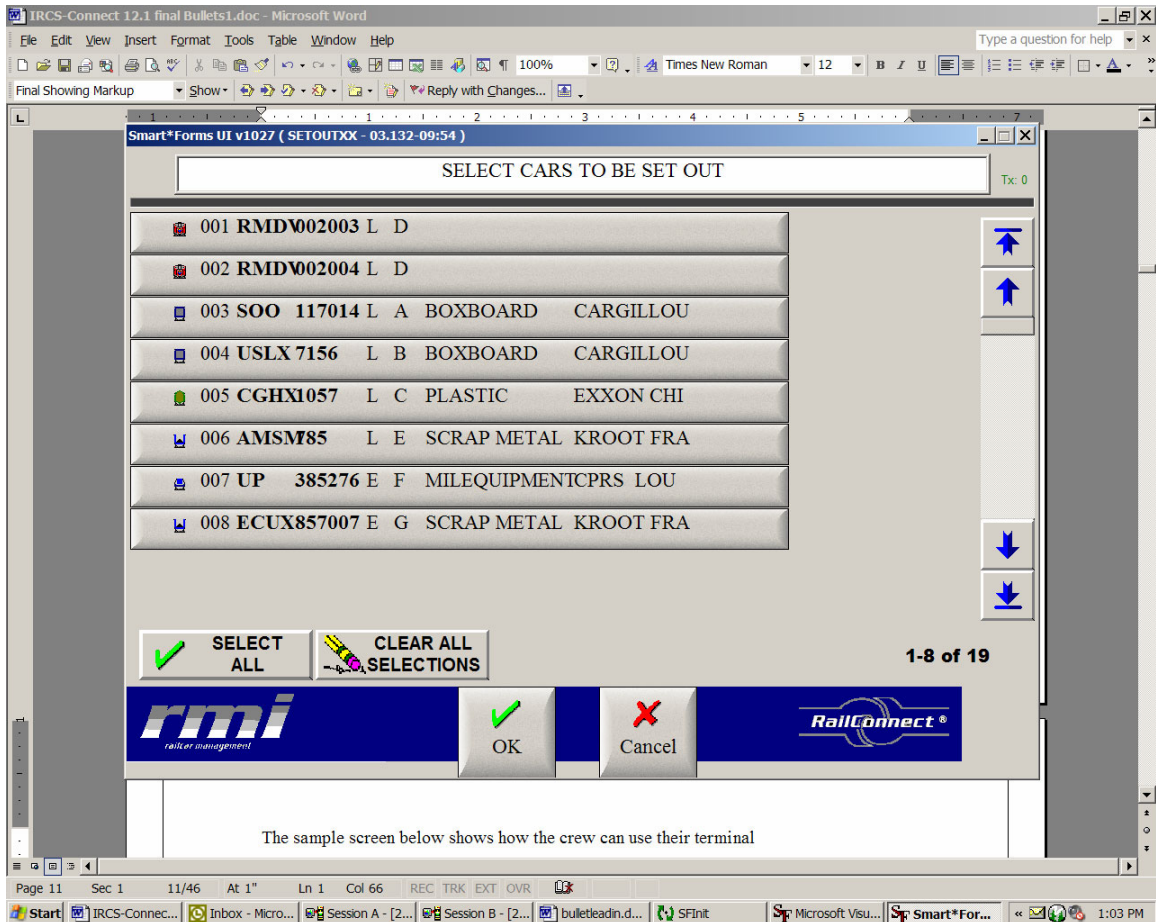
mCrew Updates

Based on feedback received from RMI's first mCrew installations, several enhancements have been made to the interface between our locomotive-based movement reporting system and TMS. The screen below shows how the crew can enter a train departure. Note that all entry is completed without the use of a keyboard.



When the crew uses their on-board computer to depart the train, the departure message is transmitted to TMS; the train and all its cars are automatically departed in the system.

The sample screen below shows how the crew can use their terminal to place the cars in their train at an industry:



The crew can simply point at the cars they worked with and place those cars at the appropriate industry. Those moves are then captured by TMS for timely reporting.

AEI Improvements

As the price of installing and managing AEI readers continues to fall, more and more regional railroads are making an investment in this technology. RMI has made significant improvements in the way RailConnect interfaces with this new technology, including the following enhancements:

- The messages and percentage calculations that determine mis-matches during a comparison between an AEI read and a track/train/work list have been updated. This provides an easier way for you to look for missing cars or determine where sequencing problems occur. (*Project 7662 and others*)
- The *AEI Consists* list screen was changed to show the most recent read at the top of the list: (*Project 8212*)

RSFXDFR		GNRR		AEI Consists					QPADEV0002				
Find: Station		Site		Direction			From Road						
Date	110702	Time	Car	IB	OB	PT	WL	SI					
? Station	Site	Dir	From Road	Date	Time	Lead Car	IB	OB	PT	WL	SI	#of Car Er	
25	AEI0000009	N		11/07/02	18:06	GNRR 9622						1	
11	AEI0000003	S		11/07/02	18:04	GNRR 9609						7	
12	AEI0000002	S		11/07/02	17:45	GNRR 9624						70	
13	AEI0000013	S		11/07/02	17:44	CSXT 4439						50	
13	AEI0000013	S		11/07/02	18:01	CSXT 2297						2	
29	AEI0000017	N		11/07/02	17:47	UPFE 468171				R		50	
29	AEI0000017	S		11/07/02	17:52	GATX 44148				P		13	
25	AEI0000009	S		11/07/02	17:53	GNRR 9622						1	
13	AEI0000013	S		11/07/02	17:34	CSXT 4439						5	
25	AEI0000009	S		11/07/02	17:31	GNRR 9614						78	
14	AEI0000010	N		11/07/02	17:26	GNRR 9616						98	
14	AEI0000010	S		11/07/02	17:37	UTLX 661240				R		22	
												More..	
1=Header 5=Equipment D=Delete E=Errors P=Print R=Resolve Reads F3=Exit													
CREATE: I=Inbnd O=Outbnd M=Multi S=Scale Intrfc T=Pend Train W=Work List													

- The list screen was also changed to allow you to search for consists at a specific station.

Changes in Train Functions

The following enhancements have been made to train management functions:

- You can now add cars to an active train from a work list. (*Project 8608*)
- You can build an outbound consist in advance from a pending or active train using the K=Interchange option. (*Project 7942*)

Intermodal Ramping Consist Change

When building an intermodal ramping consist, you can now select the intermodal flats with which you want to work. (*Project 8623*)

Inbound Consists Changes

The inbound consist features have been enhanced in this release with several new views and very powerful new functions that enable you to make automatic car movements from an interchange consist.

Perhaps the most powerful new option is the new Unit Train Interchange function. This new feature enables you to not only interchange cars online, but also to automatically place, release, and deliver those cars offline, all in one step. This process is especially useful for railroads handling cars in multi-car or unit train cuts in which the equipment turns very rapidly.

The sample screen below shows the new format of the *Inbound Interchange* screen. Several new features are available from this screen:

- You can now select or deselect the specific cars you want to interchange.
- You can use **F7** to toggle between several different views of the cars you are about to interchange.
- You can use the new **F6=Unit Train Interchange** option not only to bring the cars online but to move them as well.

RSD9DFR		NSRR		Inbound Interchange				RMICDBA1	
Station	LOUIS	Road	CSXT	Track	MCREW	Front/Back	B Date	20101	Time 800
Find Car:								*ALL	
								BLOCK	
? Car		LE SH	AI	Switch To		Block To	Station	Track	SP DV
CSXT	393000	L				INDPOW	IND	INDY	
CSXT	393001	L				INDPOW	IND	INDY	
CSXT	393002	L				INDPOW	IND	INDY	
CSXT	393003	L				INDPOW	IND	INDY	
CSXT	393004	L				INDPOW	IND	INDY	
CSXT	393005	L				INDPOW	IND	INDY	
CSXT	393006	L				INDPOW	IND	INDY	
CSXT	393007	L				INDPOW	IND	INDY	
CSXT	393009	L				INDPOW	IND	INDY	
CSXT	393010	L				INDPOW	IND	INDY	
CSXT	393011	L				INDPOW	IND	INDY	
CSXT	393012	L				INDPOW	IND	INDY	
CSXT	393013	L				INDPOW	IND	INDY	
CSXT	393014	L				INDPOW	IND	INDY	
								More...	
1=Select	F3=Exit	F5=Interchange			F6=Unit Train Interchange				
D=Deselect	F7=Alt View	F13=Select/Deselect All			F15=Toggle				

If you press **F6** to take the unit train interchange option, the new *Unit Train Inbound Interchange Handler* screen appears:

```

RSPWPVR      NSRR  Unit Train Inbound Interchange Handler      RMICDBA1
-----
Train  CSXT-COAL                      Number of Cars Selected  51
Station LOUIS      Road CSXT    Track MCREW          Date  2/01/01 Time  8:00
-----

Automatic Placement:
  Date 051303 Time 1200  Station CHICAGO  Track CARGIL

Automatic Release:
  Date 051303 Time 1400

Automatic Delivery:
  Date      Time      Train ID
                        Station      Road

F3=Exit      F10=Process Move

```

You can immediately place interchange cars at industry by entering the *Date/Time*, *Station*, and *Track* where the cars were placed. In the sample screen above, the cars to be interchanged will then be placed at Cargill on 05/13/03 at 1200.

If the cars were placed as loads, you can also automatically release them empty by entering the date and time of the release.

An Actual (Yard Cut) Interchange is created.

Note: Currently, you can only release cars empty using this option. TMS will not permit you to release cars loaded.

If the cars have already been delivered offline, you should enter the *Date/Time*, *Interchange Train ID*, and *Station/Road* where the interchange occurred. If you use the delivered portion of this option, TMS will automatically build and transmit an outbound 418 message.

Note: You can enter the delivery without the placement or release information. TMS will process the moves as bridge moves when you take this action.

Inbound Consist Screen and Summary Changes

From the *Inbound Consist* list screen you can now enter a road mark at the top of the screen, to see only interchanges from a particular road. (Project 8626)

You can enter a **U** next to a consist to print or view a summary of how cars on the consist are blocked. This is a useful option for roads handling large inbound cuts in which cars are destined to multiple points on the railroad. The following example shows the output in the new screen view:

Train Y12603		Date/Time 2/01/01				Station ID LOUIS			
Inbound									
Block To		Total	Load	Empty	Tons	Length	Haz	HB	FB
GEN	SCO	1	1	0	130	67	0	0	0
GEOPAC	COL	1	1	0	88	56	0	0	0
GPFAU	CHI	1	1	0	107	56	0	0	0
KROOT	COL	3	0	3	102	171	0	0	0
MEAD	IND	3	3	0	364	160	0	0	0
SCHPLA	IND	1	1	0	130	59	0	0	0
GEN	SCO	1	1	0	130	67	0	0	0
GEOPAC	COL	1	1	0	88	56	0	0	0
GPFAU	CHI	1	1	0	107	56	0	0	0
KROOT	COL	3	0	3	102	171	0	0	0
MEAD	IND	3	3	0	364	160	0	0	0
SCHPLA	IND	1	1	0	130	59	0	0	0
Total Cars:		20	14	6	1842	1138	0	0	0
FINAL TOTALS		20	14	6	1842	1138	0	0	0
** END OF REPORT **									

When you choose the **F14=Weights** option, the weight information for cars in the consist appears on the new *Enter Waybill Weights* screen, including gross and tare weight and the car's capacity:

RSL4DFR	GNRR	Enter Waybill Weights				QPADEV0002			

Find Car: 86 CAR(S) SELECTED									
Default Weight Type: N Enter Date/Time To Update History: 111002									
*Mass apply weight and F8/F11: N									
Average with last car partial: Y=Yes Add charges when F8/F11: Y=Yes									

Show: ALL									
(26 LOADS/ 60 EMPTIES)									
? Car	LE	KD	Commodity	Weight	Cd	Tare	Weight	Limit	Total
UTLX	640025	E	T	ACRYLIC AC			75200	188000	263
ACFX	85809	E	T	SULPHUR DI			81700	181000	263
ACFX	87806	E	T	**EMPTY**			74100	189000	263
ACFX	86722	E	T	**EMPTY**			74200	189000	263
ECUX	575055	E	T	**EMPTY**	100	E	112400	151000	263
CHVX	896920	L	C	PLASTIC	199500	N	66000	220000	286
ACFX	87568	E	T	**EMPTY**			74400	189000	263
CHVX	189501	L	T	BUTYLENE	156900	N	96900	166000	263
IHB	1104	L	E	STEEL	190480	N	68300	195000	263
GATX	67553	L	T	PETRO OIL	167868	N	72000	191000	263
More.									
C=Charge	D=Delete	E=EIF	H=History	S=Seals	W=Waybill				
F3=Exit	F5=Refresh	F6=Seals	F7=Show Intermodals						
F8=Apply Average Weight	F9=Show All/Loads/Empties	F11=Apply Fixed Weight							

When you choose to manually add a new consist, the new screen appears:

RSFLEFR	GNRR	Cars On Inbound Consist	QPADEV0002	ADD
Station 11	Train ID TEST	Road UP	Date 11/02/02	Time 12:00
			Show Intermodals: *NO	
? Car	LE KD	Commodity	Block To	W/B SDAS M Type IVNH C
				More...
'=Copy	F3=Exit	F4=Show/Hide Check Digit	F9=Look At Consist	F7=Alt View
F13=Default Load	F15=Default Empty			

The following new options are included:

- **F4=Show Hide:** This option turns the check digit display on and off. If you will not be entering trailers and containers containing check digits, press **F4**.
- **F13=Default Load:** Once you have entered cars in the consist, you can press **F13** to assign a default value of **L** for all no-bill cars in the cut.
- **F14=Default Empty:** Once you have entered cars in the consist, you can press **F13** to assign a default value of **E** for all no-bill cars in the cut.

Customer Internet Work Queue

TMS has been enhanced with a new customer interface that you can provide for your rail customers. This interface has been improved dramatically so your customers can now perform the following functions from any internet connection:

- Release empty cars at their facility.
- Order cars in that are held under constructive placement or storage.
- Mark cars for special handling (rejects, turns, or bad order).
- Order in-plant switches.

As customers enter data in the customer interface, a record is added to a work queue that you can use to monitor incoming work. This new work queue is available using option **18 Customer Instructions** from the *Work Queue* menu. When you take this option, the *Work With Customer Instruction* screen appears:

RSO6DFR		PTRA		Work With Customer Instructions				QPADEV0002	
Find Car:		Customer:		Station:		Date:		Held/Released: H	
? Car	LE KD	Commodity	Switch	Instr	Date	Time	Instr	Nbr	
CSXT	160665 L A	WOODPULP	SPOT		10/11/02	8:36		1	
CSXT	167069 L A	WOODPULP	SPOT		10/11/02	8:36		1	
GATX	4937 L T	LIMESTONE	SPOT		10/11/02	8:36		1	
GATX	5663 L T	LIMESTONE	SPOT		10/11/02	8:36		1	
GATX	5724 L T	LIMESTONE	SPOT		10/11/02	8:36		1	
OAR	3289 L B	WOODPULP	SPOT		10/11/02	8:36		1	
OAR	61251 L A	WOODPULP	SPOT		10/11/02	8:36		1	
OAR	61295 L A	WOODPULP	SPOT		10/11/02	8:36		1	
SOU	526129 L A	WOODPULP	SPOT		10/11/02	8:36		1	
UTLX	200626 E T	HYDR PEROX	REJECTED		10/11/02	10:32		7	
SP	248503 L A	WHEAT,BAGS	SPOT		10/11/02	10:52		2	
GATX	80115 E T	TOLUENE			10/11/02	11:13		1	
NATX	300026 E T	TOLUENE			10/11/02	11:13		1	
									More...
1=Select E=EIF H=History P=Print Waybill R=Remove From Queue									
S=Special Instructions W=Waybill F3=Exit F7=Alt View									

This new screen shows incoming messages sorted by date. You can use the fields at the top of the screen to filter incoming messages by a particular customer or station.

Notification and Administrative Message Changes

Several new enhancements were made to the notification area of TMS.

New High/Wide Notification Option

A new notification option is now available that allows you to enter your own free-form text to be included when you print a High/Wide notification. (*Project 8543*) When you take the option to add notification text, the *Select Notification Type to Edit* screen appears:

```
Select Notification Type to Edit

1. Constructive Placement Notification
2. Rail Notification
3. Intermodal Notification
4. Pre-Billing Notification
5. High/Wide Notification

Selection:

F3=Exit
```

Option **5 High/Wide Notifications** gives you the ability to enter free-form text to will accompany your high/wide notifications. You can include contact names and addresses, as well as information on who to contact for clearances or warnings.

Note: You must make a High/Wide notification manually from the High/Wide queue.

Automatic Notification Enhancement

With this release, you can adjust the client settings to trigger notifications that can be automatically executed at Re-Bill, Release, or Pull events: *(Project 8852)*

RSC2E1R	LIRC	Client Notification/Admin Messages	RMIJWA1	CHANGE
IRCS/Connect Version is: 12.00				
Road Mark:	PTRA	Name LOUISVILLE & INDIANA RAILROAD	260 Number	434

NOTIFICATION:				
Automatic Notification	B	Both (Rail/Intermodal)		
Notify Output Queue.	CPLCOUTQ			
E-Mail Auto Notification	Y	Yes		
Notify on Re-bill events	Y	Yes		
Notify on RLS or PFPS events.	P	(R=RLS, P=PFPS)		
ADMINISTRATIVE MESSAGES:				
Default View	O	Open		
Control Messages By Year	No			
Auto Complete Message.	No			
F3=Exit F7=Copy Open Admin Messages To New Year				

Administrative Message Changes

RMI continues to enhance the Administrative Message area of the system. As shown in the example below, you can now use TMS to maintain a wide range of message types:

```
EDBCDFR      QA      ----- MENU -----      RMICDBA1
Option      or Fast Path      /ADM  RS  Administrative Messages

  TYPE
  1 Administrative Messages
  2 General Notice
  3 General Order
  4 Daily Operating Instructions
  5 Job Bulletins
  6 Track Bulletins
  7 Terminal Instructions
  8 Unsafe Conditions

                                           Bottom
F3=Exit  F6=Messages  F9=Toggle Fast Path  F13=Fast Exit  F15=Sign-off
```

Beginning with this release, you can provide security over who can add, modify, or delete each of the message types shown above. In addition, you can now set up the system to automatically expire messages.

RWC and Waybill Changes

Build Multi-Car for Equipment Not Yet On-Line

For railroads that receive traffic from switching carriers on which the cars have not been assembled into multi-car waybills, you can now build the multi-car waybill before the car is interchanged online. This option is available from the *Inbound Consist* screen by entering an **M** next to the consist containing the cars to be billed. When you choose the options to work with cars on a multi you can now also select cars not currently on-line. See options **7** and **8** on the sample *Multicar Waybill* screen below: (*Project 7933 and others*).

```
RSE4PVR      NSRR      Multicar Waybill
RMICDBB1

Station : CHICAGO
Lead Car: ACFX 65163  Status: INBOUND

ONLINE CARS:
  1. Select Empty Cars to Build a new Multicar Waybill
  2. Key Empty Cars to Build a new Multicar Waybill

  3. Select Loaded Cars to include in a Multicar Waybill
  4. Key Loaded Cars to include in a Multicar Waybill

  5. Select Loaded Cars to include in a Foreign Multicar Waybill
  6. Key Loaded Cars to include in a Foreign Multicar Waybill

OFFLINE CARS:
  7. Select Loaded Cars to include in a Multicar Waybill
  8. Key Loaded Cars to include in a Multicar Waybill

Enter selection 7

F3=Exit
F24=More Keys
```

The following option is included:

7 Select Loaded Cars to include in a Multicar Waybill: When you choose this option TMS presents you the *Select Waybill Type to Add to Multicar* screen to indicate where the cars you are selecting are currently located:

```
Select Waybill Type to Add to Multicar

1. Bills of Lading
2. Inbound Waybills
3. Completed Waybills

Enter Selection

F3=Exit  ENTER=Continue
```

Once you have made your selection TMS will show you the waybills that are in that category. You can then select those bills to be included in your multi-car waybill.

Supertrip

Supertrip improvements in this release are primarily centered on improving the flow and accuracy of data from RMS/TMS into Supertrip itself.

Note: RMI will be providing special Supertrip training classes during the 2003 Users' Group Meeting. If you are interested in a training class, please contact RMI Support for more information on these informative sessions.

Automatic Refresh and Undo Load/Unload

When you take the utility option to **Undo** a loading or unloading event, TMS now automatically marks the Supertrip record to be rebuilt. (*Project 6348*)

Report Calculation Changes

Calculations for averages, rounding, and time between moves have been standardized throughout all Supertrip reports in TMS. (*Project 7806 and others*)

Car Owner Field Change

The way the *Car Owner* field is populated has been changed slightly. The field has been retitled *Car Hire Owner* field and moved to the *Car Hire* screen in Supertrip. This field is populated as car hire payments are calculated and merged into TMS. (*Project 7983*)

Currency Code

When Supertrip is updated, if the currency code is CAD we convert the funds to U.S. Dollars. This conversion only takes place for roads that have the *Supertrip Client Switch Setting* set to **Yes** as shown in example below:

RSCXE1R	LIRC	Client Supertrip Setup IRCS/Connect Version is: 12.00	RMICDBA1	CHAN
Road Mark: LIRC		Name LOUISVILLE & INDIANA RAILROAD	260 Number 434	

SUPERTRIP:				
Use Moves For Supertrip Traffic Type		No		
Update Supertrip With ISS Waybill Data		No		
Use currency conversion in Supertrip		Yes		

Reports

Automatic Report Scheduling

The following reports can now be set up to run as automatically scheduled jobs:

- Air Brake Test Report (*Project 8522*)
- Cars Returned Report. (*Project 8440*)

New Online Inventory Report

A new option was added to the *Online Inventory Report* that enables you to summarize cars by station, station and zone, or station and tracks. This new report can be automatically scheduled and gives you a quick view of how your railroad stands at any particular pointing time. The sample below shows a summary of all cars on the railroad: (*Project 8730*)

STATION SUMMARY							
	Load	Empty	Total	0-12	12-24	Interchg 24-36	>36
CHICAGO Totals:	174	146	320	0	0	2	318
COLUM Totals:	53	49	102	0	0	0	102
FRANK Totals:	12	71	83	0	0	0	83
INDY Totals:	110	18	128	0	0	0	128
LOGAN Totals:	6	5	11	0	0	0	11
LOUIS Totals:	10	143	153	0	0	0	153

The sample below shows how the same report can be set up to summarize tracks in a station:

	Load	Empty	Total	Oper	Haz	>24hrs	Tons

Station: CHICAGO							

Track: APOLLO	0	4	4	0	2	4	123
Track: CARGIL	1	0	1	0	0	1	118
Track: CARGILFEED	8	0	8	0	0	8	897
Track: CARGILFERT	9	0	9	0	0	9	1179
Track: EXXON1	18	1	19	0	0	19	2182
Track: EXXON2	18	0	18	0	0	18	2282
Track: HOUSE	0	0	0	1	0	1	260
Track: KITIND	0	1	1	0	0	1	34
Track: MCREW	6	12	18	3	0	21	1724
Track: MONSANTO	10	0	10	0	0	10	1284
Track: SHOP	0	2	2	0	0	2	60
Track: 001	22	4	26	0	0	26	2792
Track: 002	3	6	9	0	0	9	580

Additional Online Inventory Report Enhancements

You can now choose to print in a new format that also shows the cars' inbound interchange road and date. (*Project 8746*)

You can now use the *Online Inventory Report* to evaluate not only how long equipment has been online, but also how long cars have been at a station. In the example below, the user is using the new *Type* field select only cars that have been at a particular station for over 24 hours. Other *Type* field options include time on the railroad or time since last movement.

```

RSOHPVR      NSRR Online Inventory Report Control (1 of 2)      RMICDBA1

Format Options:
Report Title . . . . CARS AT CHICAGO OVER 24
Report Type . . . . 1 Cars by Station/Track
Detail Type . . . . I Interchange Info (Reports 1 and 8 ONLY)
Sort Report By . . . (Reports 1,3,4,5,8,9,S,X)

Print Special Instructions      Print Ground Inventory
Print Block To or Switch To B

Days Online . . From      To      Last Move      From Road
Hours . . . . .      24      Type S

E=Exclude or S=Select: Bad Order      Storage      In Bond      System Cars
On CP      At Customer

Location Selection:
Station . . . . From CHICAGO      To CHICAGO (Leave blank for all Stations)
Zone . . . . . From      To
Track . . . . . From      To
FSAC . . . . . From      To
Milepost . . . . From      To
F3=Exit      F6=Display Report On Screen      Page Down=Next Screen

```

The second *Online Inventory Report* select screen has also been modified to permit you to select cars based on the *Traffic Type* that Supertrip has assigned to the move. This is particularly helpful for switching and/or junction settlement roads that receive waybills of poor quality from connecting carriers. (*Project 8769*)

```

RSOIPVR      NSRR Online Inventory Report Control (2 of 2)      RMICDBA1

Waybill Selection:
L/E Status. . . . .
STCC . . . . . From          To
Hazardous Only. . . . . (Y=Yes)
Print No Bills. . . . . (A=All, R=Revenue)
Switch/Haulage. . . . . (S,H)
Product Group . . . . .
Weigh Flag. . . . .
Activity Indicator

Supertrip Traffic Types:  F  B

Equipment Selection:
Reporting Mark. . . . .
Car Kind . . . . . From          To
Foreign/Private/TTX (F,P,T)
Fleet Name. . . . .
Cars From. . . . . To
Rail/IM/Conveying (R/X/C)
Per Diem Cars Only (Y=Yes)

Customer Selection:
Block To. . . . .
Switch To . . . . .
The Customer. . . . .
Block To Type . . O
Consignee . . . . .
Shipper . . . . .

Out Queue / Number of Copies  EMAIL      /

F3=Exit  F6=Display Report On Screen  Page Up=Prior Screen

```

The *Block To Type* field was also made a part of the selects. This enables you to select for the report only cars that are blocked with a customer code that is an outbound interchange type customer.

In the example above, the *Supertrip Traffic Type* and *Block To Type* fields are used to select cars that are **F**orwarded or **B**ridge and that are destined to blocking points that represent an **O**utbound interchange.

Air Brake Test Report Change

The Air Brake Test report, as shown in the sample screen below, can now be run based on cars in a specific zone or cars sitting on a specific track. (*Project 8692*)

RSJ8PVR	NSRR	Air Brake Test Report	RMICDBA1
---------	------	-----------------------	----------

Air Brake Test Date: 51602

NOTE: Use select (?) at lowest level required, higher levels will be selected along with it.

Station:	. .	(Leave blank for ALL stations)
Zone . :	. .	(Leave blank for ALL zones)
Track. :		(Leave blank for ALL tracks)

Built: Month/Year: /

NOTE: This selection will exclude equipment with a later built date. If no date is found for the equipment, the selection is not checked and it is printed on the report.

Out Queue / Number of Copies: /

New Activity by Shift Report

Managers now have a new report available that can analyze movements by shift over a particular time period. By choosing option **41 Movement History by Shift** from the *Print Menu*, you can designate the date ranges, shifts, and move types you wish to analyze. (Project 8727)

```
RSQKPVR      NSRR      Movement History by Shift Report      RMICDBA1

Date Range . . From 050103 To  51603

Define Shift:
  First . . . From/To Time      1 /  7:00
  Second. . . From/To Time     7:01 / 13:00
  Third . . . From/To Time    13:01 / 19:00

Specify Move Type:
  PACT  PFPS

Out Queue / Number of Copies . :           /

F3=Exit  F6=Display Report On Screen
```

In the sample screen above, the rail manager is analyzing placements and pulls by shift during the first half of May.

Switching/Miscellaneous and Demurrage Billing

Several enhancements were made to the TMS Switching/Miscellaneous Billing module during this release. Work continues in this area; your thoughts and ideas are always welcome.

Private Car Demurrage Change

In the past, TMS would not trigger a private car as ready for demurrage calculations until the car was released, even though the calculations only ran through placement. Effective with this release when a private car is placed it will be extracted into the demurrage process. (*Project 8537*)

PCON History Record Deleted

When a customer rejects a car, the PCON event for that car is automatically deleted. (*Project 8538*)

PCON Deleted at Re-Bill Time

You can set TMS up to automatically delete the PCON record for a car when the car is re-billed while under constructive placement. (*Project 8539*)

Master Files

Synonym Master Changes

The Synonym Master was modified in this release to give roads the ability to synonym based not only on *Customer Name* and *State* but on *Customer Address* and *City* as well.

Customer Address Synonym

The Customer Address synonym is often helpful if you serve very large facilities with different plants located in the same facility.

For example, you might serve three Chevron facilities in the same station. Formerly, the Synonym file could only match on customer name. However, with the enhanced ability to synonym by address, you can now set up your file to recognize a specific address when matching an inbound EDI message to your customer master.

The *Edit Synonym File* screen below shows the new TMS Synonym Master:

EDBCEFR	QA	Edit Synonym File	RMICDBB1	CHANGE

Name		City	St	

				* ACTIVE *
				-Address-
? Name		City	St Customer	Use Exst
AIRPROCHE		CALVERT CITY	KY AIR	CAL
AIRPROCHE		DAYTON	NJ AIR	DAY
AIRPROCHE		ELIZABETH	NJ AIR	ELI
AIRPROCHE		ELKTON	MD AIR	ELK
AIRPROCHE		NEWARK	NJ AIR	NEW
AIRPROCHE		PACE	FL AIR	PAC
AIRPROCHE		PADUCAH	KY AIR	PAD
AIRPROCHE		PHILA PORT RICHMOND	PA AIR	PHI
AIRPROCHE		PHILADELPHIA	PA AIR	PHI
AIRPROCHE		PHILADELPHIA PORT R	PA AIR	PHI
AIRPROCHE		PHIPTRICH	PA AIR	PHI
AIRPROCHE		WHITING	IN AIR	WHI
AIRPROCHEM		ELKTON	MD AIR	ELK
AIRPROCHEM		PHILA PORT RICHMOND	PA AIR	PHI
More...				
'=Dup A=Active C=Add Cust D=Delete I=Inactive P=Cust Synonym L=Addresses				
S=Set on/off Use Address T=TMS Waybills F3=Exit F9=Add F10=Active/Inactive				

Note: You can now use the **L** option to indicate that you want to add additional address information to serve as matching criteria against inbound EDI.

When you take this option, the *Edit Synonym Addresses* screen appears:

EDDMEFR	QA	Edit Synonym Addresses	RMICDBB1
Name: AIR PRODUCTS		City/State: ELIZABETH	NJ
Customer: AIR	ELI		
? Address			
734 SOUTH MAIN			
_____		Postal Code	Customer
			AIRPRO COR
PLANT #4			
		Postal Code	Customer
			AIRPRO ELI
			More...

You can add as many addresses as you need to associate the different customer locations with different blocking points.

In the example above, the South Main location will synonym to the customer AIRPRO COR which might represent a corporate billing address. The address of Plant #4 will be synonymed to AIRPRO ELI which might be the plant location.

City Synonym

The City/State Synonyms Master allows you to create and maintain a list of synonyms that will correct the way city names are spelled when received via EDI. (*Project 8306*)

For example, St. Louis, MO might appear on an EDI as

ST LOUIS
ST. LOUIS
SAINT LOUIS.

You can use the City/State Synonyms Master to recognize the various spellings and standardize the way the way cities are stored in the waybills. This may, in turn, assist you to set up blocking tables or rate movements in the system.

Road Master

The Railroad Name Master, which is available from the *Reference File* menu, was enhanced in this release.

EDAGE1R	QA	Road Master	RMICDBA1	CHANGE
Road	:	CSXT		
Road Number . .		712	Owner Road	
Name		CSX TRANSPORTATION		
Address		CSXT CSC TSE-LOU		
		6737 SOUTHPOINT DRIVE SOUTH		
City		JACKSONVILLE	State FL	Postal Code 32216
Attention . . .		MGR: REVENUE ACCOUNTING		
Outbound 404/417 Partner			Y	Send 419 Flag
Create Reverse Route Empty on Delivery .				Send 420 Flag
Auto Send EDI on Reverse Route			Y	Send 425 Flag
418 Send Actual Flag			Y	
Water Carrier Flag				Process 161 Ind
Switch Extract				
Commentary . . .				
Modified by . .	:	NSRRMTD	Date: 10/01/99	Time: 8:19
F3=Exit		F11=Delete	F21=Edit	E-Mail Addresses

If you set the *Process 161* field to **R**, TMS will process inbound EDI 161 consist messages.

Blocking Table Updates

The blocking function has received several different enhancements for this release. On the *Edit Blocking Rule – Selection* screen, you can now use just a portion of the customer code to serve as matching criteria. In the example below, the user is instructing the system to use any shipper code that begins with AKSTEEL. The three position address type is not required.

RSNWPVR	NSRR	Edit Blocking Rule - Selection		RMICDBA1
Inbound EDI				CHANGE
DESCRIPTION: AM GONDOLAS - PLAIN				ACTIVE/INACTIVE . . A (A,I)
Transport Method.	R			Load/Empty. E
Origin City/State		FSAC	Car Range Selected Y	
Dest City/State .		FSAC		
Route			Pool ID	
Dest Road in Route			Foreign/Private . .	
STCC		to	Weight Qual	
Weight		to	Method of Payment .	
Car Type	G100	to G752	To Road	
From: Road		Junction		
Consignee			Name	
Care of Party . . .			Name	
Shipper	AKSTEEL		Name	
Freight			Name	
Notify			Name	
			Traffic Type	
			EDI 418 Road.	
			Unit/Multi Train.	
			Activity.	
PageDn=Apply Info F3=Exit F11=Delete Rule F19=Select Car Ranges				

The apply side of the blocking table entries now allows you to seed empty cars with one RWC and loaded cars with another.

RSNXPVR	NSRR	Edit Blocking Rule - Apply		RMICDBA1
Inbound EDI				CHANGE
DESCRIPTION: AM GONDOLAS - PLAIN			Load/Empty: E	
RWC:				
Load			Full Seed	
Empty			Full Seed	
Block To	KROOT	COL		
Station/Track/Spot.	COLUM			
Switch To				
Switch Instr.	SCRAP LOADING			
Serving Station . .				
Interchange Station				
Car Kind				
Activity				
Priority				
To Be Weighed . . .				
PageUp=Selection F3=Exit F11=Delete Rule				